

# Dowel Bar Inserter Attachment

## Step by Step



HW-091007-D4

GOMACO's Dowel Bar Inserter (DBI) attachment is a fully automated system for four-track pavers. It features the exclusive G+® control system which manages the timing and operation of the DBI functions. The process starts when a bar loading trolley travels across the paving width and loads a bar into each bar tray. The accuracy of GOMACO's patented loading system accounts for the proper number of bars inserted into the slab. Several of the DBI concepts, systems, and components hold United States and International patents.



HW-100905-D4

**1:** The bar loading trolley places a bar into each bar loading tray across the entire width of the new pavement.



CG-071106-D5

**2:** The forks wait in stand-by mode for the insertion point to be signaled by the G+ control system.

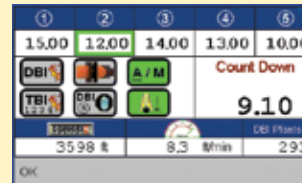
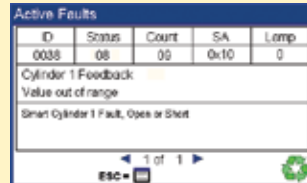
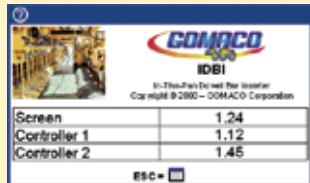
**GOMACO®** The Worldwide Leader in Bar Placing Technology





**3:** Vibration is applied to the forks on insertion to consolidate and close the concrete around the inserted bars. The vibration to the forks is variable, up to 7500 vpm. The paver never stops during the insertion process. GOMACO's exclusive computer-controlled smart cylinder technology provides the state-of-the-art system to maintain the accountability of the depth of the bars upon insertion into the slab.

### GOMACO's Exclusive G+® Control System for the Dowel Bar Inserter (DBI) Attachment–



The DBI controls have all been designed in-house by GOMACO controls engineers. The GOMACO G+ control system is easy to learn and operator-friendly. The DBI information is presented in a multi-colored graphical display, commands are presented in full text, and it is able to operate in several languages, by customer's choice. It offers the choice of metric or imperial measurements. The DBI control system also provides troubleshooting capabilities and other features that will make start up and general paving each day faster and easier. Many projects require both dowel bars and tie bars to be inserted into the concrete slab, and the G+ control system manages all of the bar inserters (front, side, and DBI attachment).

Manufactured under one or more of the following U.S. or foreign patents: 5,924,817; 5,941,659; 6,099,204; 6,450,048; CA2,211,331; 7,044,680; 7,284,472; 7,517,171; 7,845,878; 7,850,395; CA2,864,902; CA2,591,177; 8,855,967; 8,682,622; 9,051,696; 9,180,909; 9,200,414; 9,404,228; 9,428,869; 9,458,581; 9,464,716; 9,541,195; 9,624,626; 9,644,328; 9,633,162; 9,670,627; and patents pending.

GOMACO and G+ are registered trademarks of GOMACO Corporation.

GOMACO Corporation reserves the right to make improvements in design, material, and/or changes in specifications at any time without notice and without incurring any obligation related to such changes. Performance data is based on averages and may vary from machine to machine.

Printed in U.S.A. © 2017 (7 GOMACO Corp.)

**Worldwide Headquarters**  
GOMACO Corporation  
PO Box 151  
Ida Grove, IA USA 51445  
Ph: 1-712-364-3347  
www.gomaco.com  
E-mail: info@gomaco.com

**European Headquarters**  
GOMACO International Ltd.  
Units 14 & 15  
Avenue One, Station Lane  
Witney, Oxon, OX28 4XZ  
United Kingdom  
Ph: 44-1993-705100  
E-mail: pavinguk@gomaco.com



**4:** The patented insertion forks have been designed to provide the industry standard in bar placement accuracy. The holders on the heel and toe of the insertion forks ensure the most accurate bar placement. The fork design and vibration reduces the amount of scarring on insertion and enhances consolidation of material around the bars.



**5:** The DBI attachment's finishing process includes a tamper bar, unique oscillating straightedge, paving pan and stainless steel that follow the bar inserters and repair the scarring from the insertion process.



The Worldwide Leader in Concrete Paving Technology



GOMACO Corporation's Quality Management System Is ISO 9001 Certified By The American Systems Registrar.

Quality Policy: We Shall Meet Or Exceed Our Customers' Expectations.

