


# **RTP-500**

## **RUBBER-TRACKED PLACER**



### **RTP-500 Placing Conveyor Provides High-Production Results**

High-production results are achieved with the versatility of the longest placing conveyor in the industry. The conveyor is 35 ft. (10.67 m) long and 36 in. (914 mm) wide, with 170 degree hydraulic swing, and has 12 ft. (3.66 m) of hydraulic elevation adjustment. The placing conveyor allows for fast and accurate material placement from the haul road, over the stringline or other obstacles, and reaches farther across the grade than any in the industry. The conveyor deflector directs the flow of concrete at the discharge end of the conveyor.

### **Hydraulically Folding Rear Conveyor Minimizes Transport Requirements**

Hydraulically folding rear conveyor minimizes the transport requirements on the RTP-500. The overall shipping length is 37 ft. 3 in. (11.35 m), width is 11 ft. 9.31 in. (3.59 m) with hopper attached, 10 ft. 4 in. (3.15 m) without hopper, and a height of 11 ft. 8.3 in. (3.56 m) with conveyor folded.



# **GOMACO**

*The Worldwide Leader in Concrete Paving Technology*

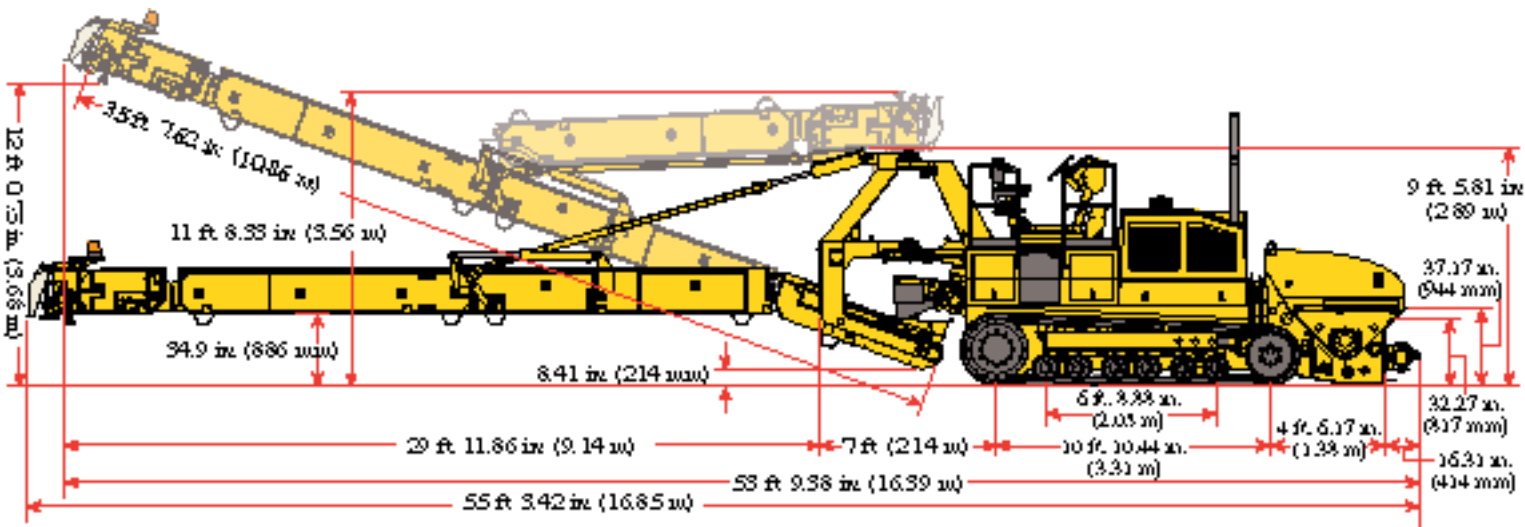
# HIGH-VOLUME PLACING W

## Largest Auger-Style Receiving Hopper In The Industry

GOMACO-designed, auger-style receiving hopper is the largest in the industry, at 10 ft. 9 in. (3.28 m) wide, and a working capacity of 4.75 yd<sup>3</sup> (3.63 m<sup>3</sup>), built with the strength and durability for handling high-volume, end-dump paving operations. The hopper features a 12 in. (305 mm) hydraulic vertical adjustment to allow for gate height on dump trucks. A 14 in. (356 mm) diameter auger with speeds up to 88 rpm, quickly moves the material to the transfer conveyor.

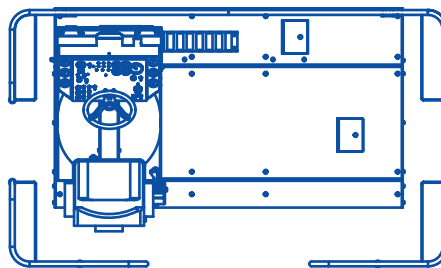


Shaft-mounted eccentric vibrators provide vibration for emptying the hopper after each load and increase flowability. The hopper/truck seal is supported by a hydraulically tensioned cable for consistent sealing on a wide variety of dump truck bodies. The 36 in. (914 mm) wide transfer conveyor moves material to the rear placing conveyor at speeds up to 608 fpm (185 mpm). Both conveyors are activated with a single switch and have individual speed controls.

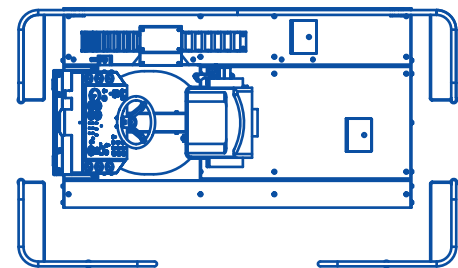


## Console Versatility

The operator's console provides a panoramic view of the entire operation. The console rolls from left to right on the platform to provide more comfort and visibility for the operator. The versatile console can be set at five different positions. It can be positioned straight forward or turned 90 degrees to the left or to the right.



Left side straight ahead position



Left center with 90 degree rotation

# WITH HIGH SPEED MOBILITY



CS-120101-D17

## Fast Job-Site Mobility

The GOMACO RTP-500, powered by a John Deere 6081H turbocharged diesel engine, has fast job-site mobility, with a travel speed up to 9 mph (14.5 kph), and an operating speed up to 110 fpm (33.5 mpm). The rubber tracks can go where rubber tires don't dare.

## Safety Features

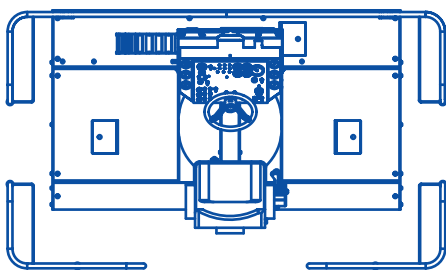
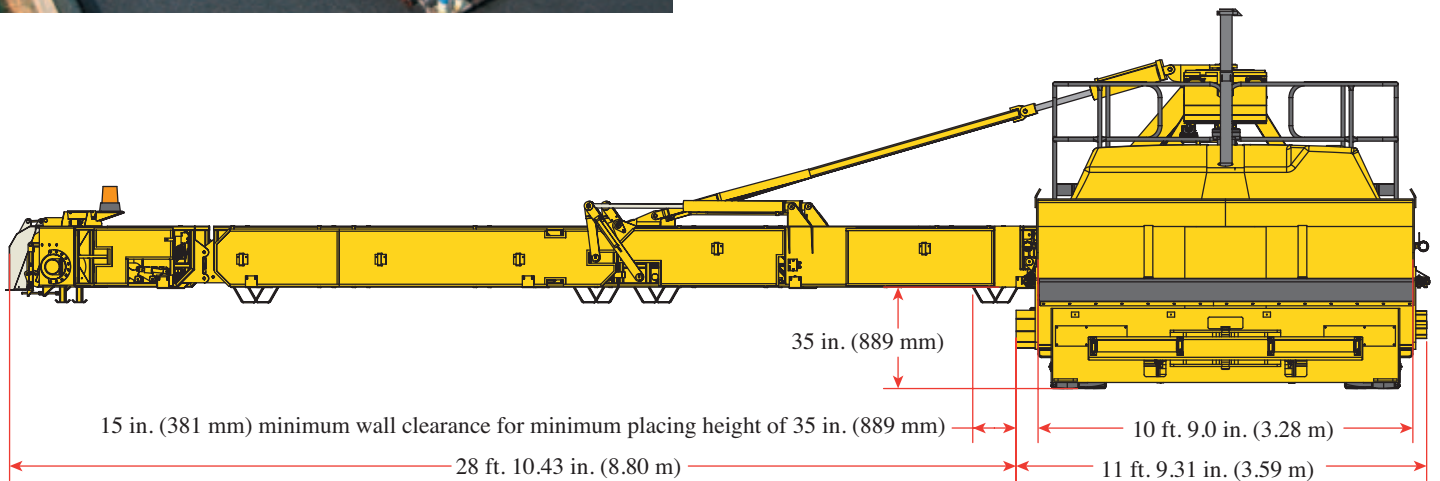
The conveyor must be centered and folded before the machine will allow the travel mode. There is no counter rotation of tracks in the travel mode. The steering sensitivity is programmed to provide balanced steering control at low or high speeds, preventing the operator from over-steering at high speeds. Emergency stop buttons are located on strategic areas of the machine. The E-Stops are on the operator's console and on all four corners of the machine.



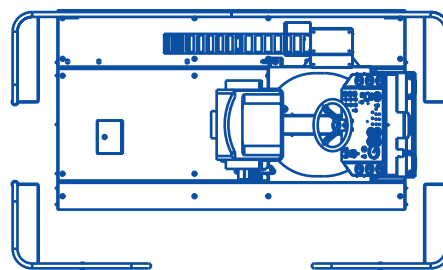
CS-070401-D15

## Versatility

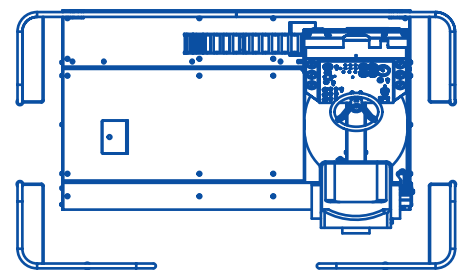
GOMACO's RTP-500 rubber-tracked paver provides the contractor with more versatility. This machine, equipped with heat-resistant belts, is used in the placement of asphalt on this mainline paving project in Belgium.



Center straight ahead position



Right center with 90 degree rotation



Right side straight ahead position

# GOMACO'S RTP-500 PLACER SPECIFICATIONS

## ENGINE

**Type:** Turbocharged diesel.  
**Make:** John Deere 6068H.  
**Number of cylinders:** 6.  
**Displacement:** 6.8 L (415 in<sup>3</sup>).  
**Power:** 250 hp (186.5 kW).

## SERVICE CAPACITIES

**Fuel reservoir:** 86 gal. (326 L).  
**Hydraulic oil reservoir:** 75 gal. (284 L).  
**Water tank:** 130 gal. (492 L).

## OPERATOR'S CONSOLE & CONTROL SYSTEM

**Operator's Console** provides ultimate operator visibility during the entire operation. The operator's console rolls from left to right on the platform to provide more comfort and visibility for the operator. The console can be set at five different positions. It can be positioned straight forward or turned 90 degrees to the left or to the right. **Sauer-Danfoss digital controller** provides easy operation for track travel mode, track steering functions, safety programming with track overrides, ramping conveyor speed for a smooth operation, and proportional rear conveyor swing for a safe operation.

## HYDRAULIC SYSTEM

**Quantity of pumps:** 6.  
**Conveyor circuits (2):** Sauer-Danfoss medium-duty closed-loop.  
**Track circuits (2):** Sauer-Danfoss heavy-duty closed-loop.  
**Auger circuit:** Sauer-Danfoss heavy-duty closed-loop.  
**Auxiliary circuit:** Sauer-Danfoss pressure compensated.  
**Oil cooler:** Remote oil cooler with hydraulic powered fan.

## RECEIVING HOPPER

**Type:** Auger-style hopper.  
**Width:** 10 ft. 9 in. (3.28 m).  
**Working capacity:** 4.75 yd<sup>3</sup> (3.63 m<sup>3</sup>).  
**Truck pusher:** Pivoting roller or optional quick hitch.  
**Hydraulic vertical adjustment:** 12 in. (305 mm) hydraulic vertical adjustment to allow for gate height on dump trucks.  
**Vibration:** Shaft-mounted eccentric vibrators provide vibration for emptying the hopper after each load and increase flowability.  
**Rubber hopper/truck seal:** The hopper/truck seal is supported by a hydraulically tensioned cable for consistent sealing on a wide variety of dump truck bodies.

## AUGER

**Size:** 14 in. (356 mm) diameter x 14 in. (356 mm) pitch.  
**Speed:** Up to 88 rpm.  
**Lighting:** Welded or removable.

## CONVEYORS

**(transfer conveyor and hydraulically folding rear conveyor)**  
**Controls:** Both conveyors are activated with a single switch and have individual speed controls.  
**Belt speed:** 608 fpm (185 mpm).  
**Transfer conveyor width:** 36 in. (914 mm).  
**Rear conveyor width:** 36 in. (914 mm).  
**Rear conveyor length:** 35 ft. (10.67 m).  
**Rear conveyor hydraulic elevation:** 12 ft. (3.66 m).  
**Rear conveyor hydraulic swing:** 170°.

## TRACK SYSTEM

**Type:** Two GOMACO friction drive rubber tracks.  
**Track width:** 19 in. (483 mm).  
**Track length:** 13.5 ft. (4.11 m).  
**Automatic tensioning:** Hydraulic.  
**Bogie wheels:** 13 in. (330 mm) diameter, 12 per track, steel/rubber, oscillating - 2 in. (51 mm) total vertical travel per wheel.  
**Idler wheels:** 24 in. (610 mm) diameter, two per track, steel/rubber.  
**Final drive:** Fairfield two-speed planetary with parking brake.  
**Pump & motors:** Sauer-Danfoss heavy-duty, closed-loop.  
**Tractive effort:** 20,000 lbf. (88,964 N).  
**Travel speed:** Up to 9 mph (14.5 kph).  
**Work Speed:** Up to 110 fpm (33.5 mpm).  
**Ground Pressure:** 45,000 lb. (20,412 kg) empty: 9.1 psi (63 kPa) 64,000 lb. (29,030 kg) loaded: 13.2 psi (91 kPa).

## DIMENSIONS

**Shipping width with hopper:** 11 ft. 9.31 in. (3.59 m).  
**Shipping width without hopper:** 10 ft. 4 in. (3.15 m).  
**Shipping height with conveyor folded:** 11 ft. 8.33 in. (3.56 m).  
**Shipping height without conveyor folded:** 9 ft. 5.81 in. (2.89 m).  
**Shipping length with conveyor folded:** 37 ft. 3 in. (11.35 m).  
**Dry machine weight:** 45,000 lb. (20,412 kg).  
**Operational width:** 11 ft. 9.31 in. (3.59 m) minimum width.  
**Operational length and height:** Variable length and height, depending on conveyor positioning. (note: see drawings and dimensions on inside pages)

## SAFETY FEATURES

- The conveyor must be centered and folded before machine will allow travel mode.
- There is no counter rotation of tracks in the travel mode.
- Programmed steering sensitivity provides balanced steering control at low or high speeds, preventing the operator from over-steering at high speeds.



The Worldwide Leader in Concrete Paving Technology

### Worldwide Headquarters

GOMACO Corporation  
PO Box 151  
Ida Grove, IA USA 51445  
Ph: 712-364-3347

Fax: 712.364.3986

International Fax: 712.364.4717

E-mail: info@gomaco.com

### GOMACO International Offices

GOMACO has a worldwide distributor network for sales and service. Check the GOMACO Web site at [www.gomaco.com](http://www.gomaco.com)

[www.gomaco.com/Resources/rtp500.html](http://www.gomaco.com/Resources/rtp500.html)

Cover Photos: Top Photo, CS-120104-D31; Bottom Photo, SH-090102-D34

MANUFACTURED UNDER ONE OR MORE OF THE FOLLOWING U.S. OR FOREIGN PATENTS: 3,299,786; 3,450,011; 3,541,931; 3,779,661; 3,959,977; 4,073,592; 4,136,993; 4,226,917; 4,343,513; 4,360,293; D-266,850; 853,607; 861,819; 954,773; 406,787; 1,147,187; 133,220; D-512,249; 4,717,282; 4,457,645; C-1,110,893; C-1,191,044; 12,890-1-0010; 5,061,115; 7,509,187; 7,509,615; 5,102,267; 5,101,360; 4,954,019; 4,984,639; 5,190,397; 5,209,602; 0,518,535; 2,067,126; 494,257; 69,031,836-7-08; 2,069,516; 5,924,817; 2,833,084; 7,044,680; 7,284,472, AND PATENTS PENDING.

GOMACO Corporation reserves the right to make improvements in design, material, and/or changes in specifications at any time without notice and without incurring any obligation related to such changes. Performance data is based on averages and may vary from machine to machine.

Printed in U.S.A. © 2008 (1-GC) GOMACO Corporation Order #RTP-500 Material Placer